

Two Bedroom Apartments

APARTMENTS

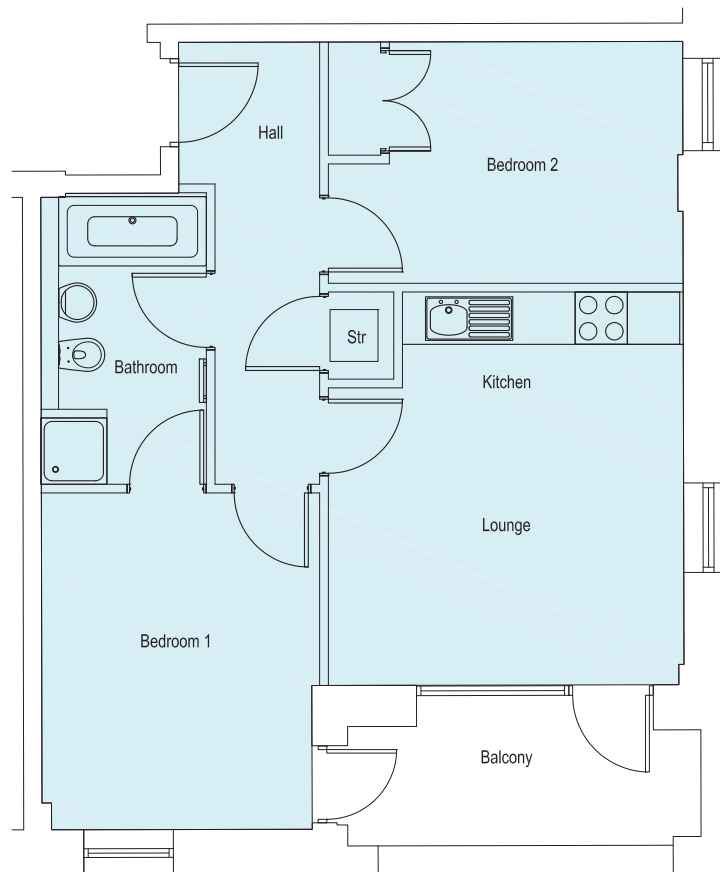
H103, H106*, **Ground Floor Level**

H203, H206*, **First Floor Level**

H303, H306*, **Second Floor Level**

*Actual layout is opposite to floor plan shown, please contact the sales advisor for more information.

FLOOR PLAN



SPECIFICATIONS

METRIC

IMPERIAL

Kitchen/lounge	3.35m x 4.51m	11' 0" x 14' 10"
Hall	5.07m x 1.20m	16' 8" x 3' 11"
Bedroom 1	3.02m x 3.86m	9' 11" x 12' 8"
Bedroom 2	2.77m x 4.07m	9' 1" x 13' 4"
Bathroom	1.9m x 2.4m	6' 3" x 7' 11"



Note:

All dimensions are typical dimensions of a typical apartment. MCD (Bristol) Ltd give notice that the details provided are given in good faith but no warranties or representations are made as to their accuracy and they do not form part of any offer or contract. MCD (Bristol) Ltd reserves the right to make alterations to the layout or specification, as it is deemed necessary, without prior notification. The buyer must satisfy itself by inspection or otherwise as to the correctness of the information given and it may not rely upon these details as a statement of fact. Images shown are of sample interiors, please contact the sales advisor for the actual interior specification.